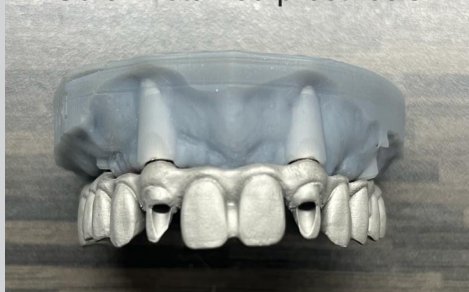
 D TECH DENTAL TECHNOLOGIES	Case Record		Case Date	10 Aug 2022
	Lab Name : Tripti Dental Lab, Nagpur		Case Ref	Aug 22/MS
	Case No	CR-3DR-MODEL-13	Rev No &Date	02/10. 2023

3D Printing of Implant Analog Model

Implant Analog Placement in Model



Screw retained prosthesis



Analog with impression post



Gingival mask



Product used: Model Standard Grey



About The case

Lab receives various cases of implants and screw retained prosthesis.

Outcome & Lab's Comment

In all cases D Tech Accuprint Model Standard was a perfect solution for printing accurate models. This was followed by placing the abutment and prosthesis. Everything fitted perfectly.

About the Lab

Tripti Dental Lab is a Prominent Dental Lab in Nagpur, Maharashtra which Provides High Quality Dental Prosthesis.